



# Archived resources

For further resources and  
documentation please visit us:  
**[www.cinos.net](http://www.cinos.net)**

# CLEVERTOUCH®

## NEW UX Pro

Let the ideas flow without interruptions. Meet in huddle spaces, meeting rooms, or have colleagues call in remotely to share your screen. No wires, no waiting, no fuss. Share content from any device, on any platform, and use all the programmes, software and apps that your business relies on. Increase productivity and make your meetings more fluid.



## Powerful and feature-rich 4K touchscreen

### Comprehensive Warranty

Industry leading warranty tailored to your needs

### NEW Microphone

Built-in line array microphone.

### Add any USB Camera

For a full unified comms solution.

### 4K

True 4K resolution and sharper user experience throughout

### Dual recognition stylus

Comfort stylus.

NEW

### Security Matters

Use a wireless or hardwired connection so that internal team members and visitors can connect safely using separate networks.

### No ongoing subscription charges.

### Environmentally Friendly Motion Detection

Equipped with Proximity Sensors your Clevertouch will power off when no one is detected in the room.

NEW

NEW

### High Precision Technology

Our patented Super Glide Touch technology offers the most fluid writing experience on a touchscreen. It's as smooth as writing on a presentation board - with no lag. With the ability to differentiate between palm-erase, fingertouch, and stylus-writing, there's no need to change settings mid-flow.

### Clever Account Profile with NFC

With an NFC sensor built into the bezel, just tap your NFC card on the bottom of the screen to instantly log in to your profile.

NEW

### Cloud Accounts

Sync with your Cloud accounts so that you can work anywhere at any time.



NEW

### Room filling sound

45W Max Power for room-filling sound.

NEW

### Connectivity

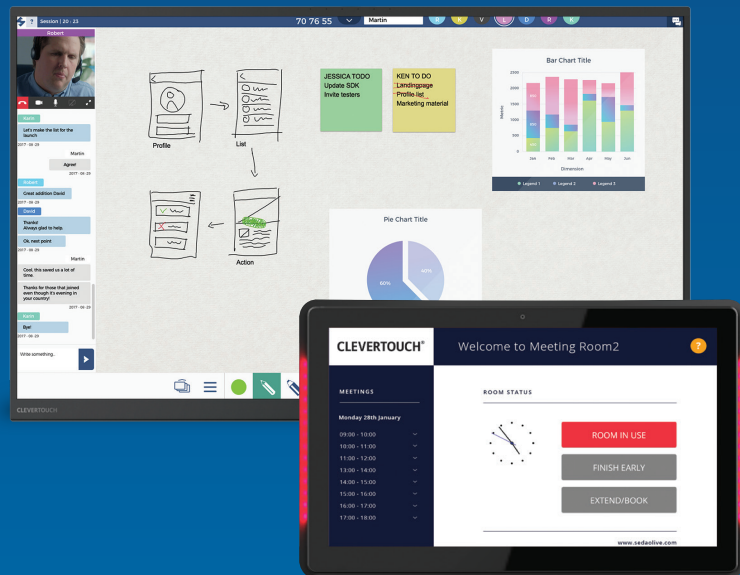
Huge connectivity. Includes 2x USB-C ports.

# Redefining the User Experience

Streamlining communication is key. Collaboration is something we know every business needs, but is yours prepared for it?

Clevertouch has created the all-in-one Enterprise Ecosystem for the agile workplace, combining our new UX Pro touchscreen, integrated room booking and UC platform – one cost, no ongoing subscriptions and will fit seamlessly into your existing set up.

A real-time collaborative workspace that enables participants to work together, in an open environment, whilst ensuring that the collaboration systems and the underlying networks remain totally secure.



## Professional digital-signage ready Large Format Displays

Make a great first impression with a Digital Signage screen in your lobby. With hundreds of templates supporting landscape or portrait displays, fully customise video, images, RSS feeds and more.

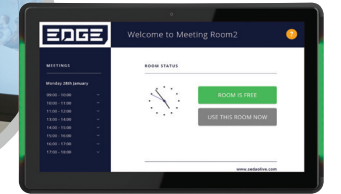
## Way-finding

Guide people through your building and enhance their experience, whilst promoting your brand throughout open spaces.



## Collaborative Team Displays

With UX Pro experience crystal clear 4K quality video and sound.



## Room Booking

Sync with your MExchange or Office365 calendar to see instantly when a room is busy or available. Book the room with a single click.



## Unified Communications

Share projects with others and mark-up in real-time. Invite collaborators to join your meeting via video with STAGE.



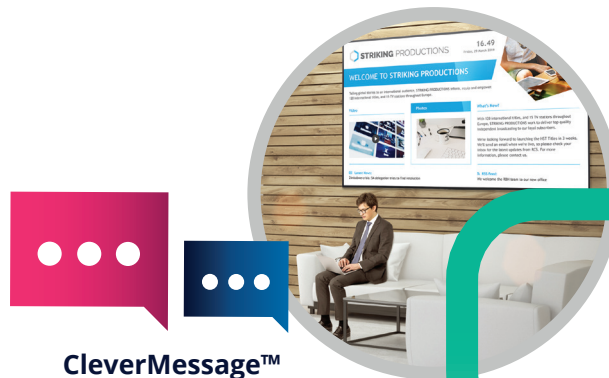
## Remote Management

Allow your IT department to remotely take control and troubleshoot or make updates.



## Screen Mirroring

With Clevershare connect with any device, on any network. Includes touchback for two-way mirroring.



## CleverMessage™

Send your company's messages to every Clevertouch screen in an instant - alerts, photos, videos, news, announcements and more are all available with dozens of templates to choose from.

Your all-in-one solution from one provider:  
**CLEVERTOUCH®**



# How UX Pro works for enterprise



Cross platform works with any software and apps



Largest range of sizes available



Screen mirroring with built-in security controls



Seamless integration with existing set up



High Precision Technology



Send messages, alerts and media to all of your Clevertouch screens remotely

## Built in

With UX Pro everything you need in your meeting room is included at no extra costs with no ongoing subscription charges. Free of charge firmware updates. Remote management of an unlimited number of devices in tablet mode. Stage browser based UC software. Whiteboard app with handwriting recognition. Room booking system syncing with Outlook 365 and MS Exchange calendars. Clever Message signage app for on-brand messaging.

## Security

We give you options. Lots of them. Go on-network or off-network. Wipe down your session when you're meeting is finished. Have a walk-up-and-use off-network tablet environment for visitors, or a full Windows 365 on-network environment for trusted colleagues. Give NFC cards to your team and guests with different settings based on their security clearance level.

## Connectivity

Seven ways to access your files: 1/Cloud integration with One Drive, Google Drive, Office 365, and Dropbox. 2/Use one of three unlimited in-built web browsers to access web-based software. 3/Bring a flash drive into meetings and access via one of 3 USB-A 3.0 super fast ports. 4/Connect via cable to your laptop or device with no driver download required. 5/Use the Clevershare app and mirror your content to your Clevertouch, including touchback - your IT department can install this on all company laptops using the MSI file. 6/Plug-and-play with the Clevershare dongle, it connects to any USB-C port and casts direct to the Clevertouch display with no calibration needed. 7/Email the Clevertouch with any files you want to display.

## Reliability

With the most comprehensive warranty on the market, UX Pro is designed for high use environments. Our support team is available when you need the most, making sure your meetings have no interruptions.

# Multi-award-winning business solutions



AV Display Innovation of the year  
AV News Awards  
2019 - Winner



Collaboration Product of the Year  
AV News Awards  
2018 - Winner



Collaboration Product of the Year  
AV News Awards  
2019 - Winner



Interactive Product of the Year  
AV Awards  
2017 - Winner



Manufacturer of the Year  
AV Awards  
2015 - Winner

# CleverMessage™

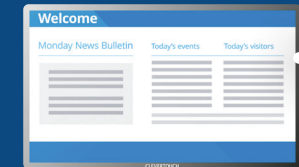
EXCLUSIVE TO CLEVERTOUCH

Transform your screen into a digital signage display when not being used for meetings. With CleverMessage you can broadcast messages, alerts and important information, such as greeting visitors or displaying the days's meetings.

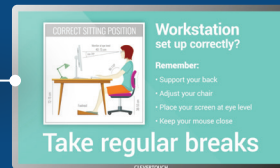
It's so easy and free to use!

- 1 Create an online account and connect your Clevertouch screens.
- 2 Add your logo images, YouTube channel, videos, posters and more.
- 3 Choose your template and schedule your alerts.

## Flexible Messaging Solutions



Daily news and activities



Full screen displays

Take regular breaks



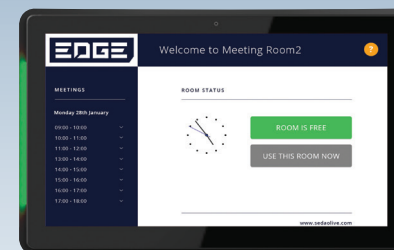
Live video messages



Emergency announcements and fire drills

# Enterprise Ecosystem

## Seamless integration



## Room Booking

- Show when the room is in use of when the next meeting is.
- Sync with your MS Exchange™ and Outlook 365 Calendars.
- Personalise with your Corporate colours and logos.
- Room Booking works with your Clevertouch.



Upgrade to a Windows 10 Pro state-of-the-art latest Intel® OPS module.

## Flexible IT Computing Solutions

From height adjustable mobile trolleys to wall mounts, we have a variety of solutions available to make your installation complete.



## Display

Diagonal Size	55" 4K, 65" 4K, 75" 4K, 86" 4K
Screen Type	TFT LCD - Direct LED Backlight
Aspect Ratio	16:9
Display Colours	1.07 Billion (10 bit)
Resolution	4K UHD (3840x2160 @60Hz)
Response Time	5ms
Refresh Rate	60Hz
LCD Viewing Angle	178°
Brightness	400 cd/m <sup>2</sup>
Contrast Ratio	55" 1200:1 65" 1200:1 75" 1200:1 86" 1200:1
Dynamic Contrast Ratio	55" 5000:1 65" 5000:1 75" 5000:1 86" 5000:1
Glass Hardness	Tempered Glass - Mohs Level 7
Glass Type	Heat tempered - Anti Glare - Super Glide Surface
Main Board	V811

## Interactivity

Writing Technology	High Precision Technology
Continuous Touch Points	20
Touch Resolution	32768x32768px
Response Time	5ms
Touch Accuracy	1.5mm
Minimum Object Size	3mm
Touch Tool	Finger, Gesture & Pen
Simultaneous Writing	Yes
Pens Included	2 with different colour assignment to each end
Ink In Tools	Yes – LYNX
Pen Type	Dual Recognition Stylus
Pen Holder	Integrated Full-length Pen Tray
Pen Tip Diameter	3mm/7mm
Pen & Touch Differentiation	Yes
Pen Identities	2
Annotation Over Any Source	Yes
Compatibility	Windows 7 to 10, Windows XP, Linux, Mac, Android, Chrome
Tracking Rate	6m/s
Scan Rate	200Hz
Gestures & Edge Swipes	Windows Supported

## Connectivity

OPS Slot	1 - Intel® spec
HDMI In	3
HDMI Out	1
USB-A 2.0	3 (1 for system upgrade)
USB Touch (type B)	3
USB A 3.0 (faster data transfer)	3
USB C	2 (One supports charging any device)
LAN In (RJ45)	1 GB
RS-232	Yes
Wake-on-Lan	Yes
Wireless Adapter 2.0 + WAP	Yes
Bluetooth	Yes
Displayport In	1
VGA In	1
VGA Audio In	1
Optical Out	1
Headphone	1
Touch Out	3
NFC Reader / Writer	Yes
Camera	Optional extra
Proximity Sensor	Yes
WIFI Module	Gen 2

## Computing

Operating System	Android Oreo 8
System Version	LUX 8
RAM	4GB
Internal Storage	32GB
CPU	Dual Core A73+Dual Core A53
GPU	Quad Core Mali G51
Android Resolution	4K
Android Module Slot	Yes
Integrated LUX UI	Yes

## Audio

Dual Front Facing, Bass Enhanced Speakers	2 x 15 Watt Speakers + 15 Watt Subwoofer
Audio Out	Yes
SPDIF / Fibre	Yes
Sound Channel	2.1
Line Array Microphone	Yes
Super Wide Sound	Yes

## Power

Power Requirements	100 – 240V ~ 50/60Hz
Power Consumption (Normal)	55" 87W 65" 118W 75" 124W 86" 172W
Power Consumption (Standby)	< 0.5 Watts
Ultra Quiet Fanless Design	Yes

## Operating & Storage Environment

Operating Temperature	0° to 40°
Storage Temperature	-20° to 60°
Operating Humidity	10% to 90% RH
Storage Humidity	10% to 90% RH
Altitude	Below 5000 metres

## Physical Specifications

Panel Dimensions	55" 1268x792x90mm 65" 1489x919x91mm 75" 1709.7x1042.4x94.8mm 86" 1957.2x1181.9x94.8mm
Packed Dimensions	55" 1428x878x220mm 65" 1697x1038x220mm 75" 1875x1208x280mm 86" 2146x1326x280mm
Net Weight	55" 31.25Kg 65" 43.95Kg 75" 56.73Kg 86" 73.45Kg
Packed Weight	55" 38.55Kg 65" 53.95Kg 75" 75.75Kg 86" 95.30Kg
VESA Mount Point	55" 400x200mm 65" 600x400mm 75" 800x400mm 86" 800x600mm

## Warranty

Warranty term and upgrade options vary by region. Contact your local reseller or distributor for information and visit [www.clevertouch.com/about/warranty](http://www.clevertouch.com/about/warranty)

## Compliance & Certification

Regulatory Certification CE, FCC, UL, Energy Star & EEC



## UX Pro Built-in Features

NUITEQ™ Stage	Yes
Embedded Digital Signage	Yes
Clevershare™ Mirroring Any Device To The Board	Free for the life of the screen (touch back)
Integrated Personalised Accounts Profiles	Yes
Cloud Account Access	OneDrive  Google Drive  Dropbox
Embedded Room Booking	Yes
Whiteboard Annotation	Yes
Email Out Direct From Touchscreen	Yes
Scan QR Code For Saving Work	Yes
CleverMessage™ - Instant Alert Messaging	Yes
Over-the-Air Updates	Yes
Remote Management Of Touchscreens (MDM)	Yes - Five year licence

## Packed Contents - Inside your Clevertouch Box

What's In The Box	(1) Clevertouch UX Pro (1) 1.5M Length HDMI Cable (1) 3M Length USB cable (A-B) (2) 1.5M USB-C Cable (1) 3M Regional Power Cable (1) 5M 3.5mm Audio Cable (1) Remote Control (2) Batteries for Remote Control (2) Dual Recognition Stylus (1) User Guide (1) Quick Install Guide (1) Wireless Adapter 2.0 + WAP (5) NFC Cards
-------------------	---

## Installation

The installation of this product should be completed by a qualified installer. Use of components not supplied by Clevertouch or not meeting minimum specifications may impact performance, safety and warranty. For more information, visit [clevertouch.co.uk](http://clevertouch.co.uk)

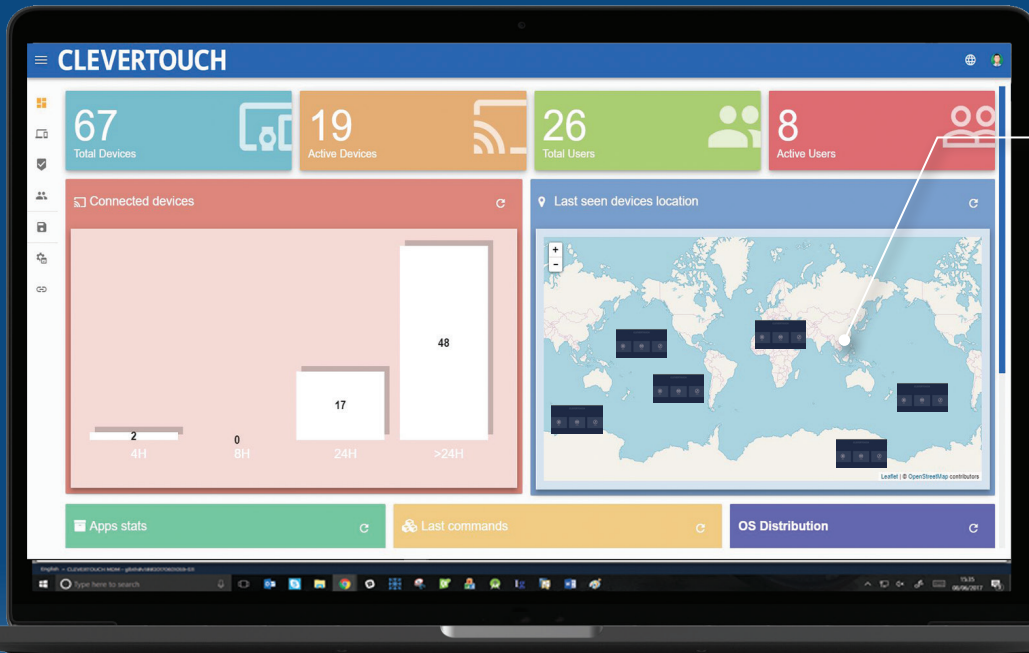
## Support

For all Clevertouch products, visit: [support.clevertouch.com](http://support.clevertouch.com)

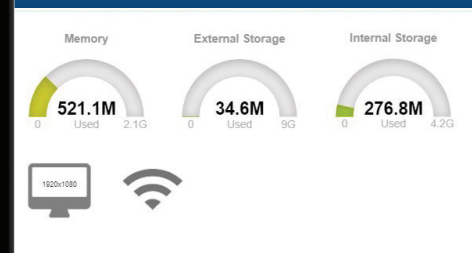
# Remote Management

Control multiple Clevertouch devices, wherever they are

With MDM the IT Department can remotely take control of your company's fleet of tablet-mode Clevertouch displays.



An overview of all your Clevertouch Displays



Update or Remove apps

View status information

View the Clevertouch screen

Install apps and files

Push messages to the Clevertouch

Lock and unlock a Clevertouch

Restart or Shutdown your Clevertouch

Add tags so you can group your Clevertouch fleet

View Individual Clevertouch Screens, update apps settings and more.

## Instant Over-the-Air Updates (OTA)

The new Over-the-Air technology means that new features, bug fixes, software and hardware updates can be seamlessly delivered to every Clevertouch screen. With just the click of a button the Clevertouch screen will search for the latest firmware update and install it, giving you instant access to the latest apps and features. Patch fixes no longer have to be downloaded onto a USB and uploaded manually, giving IT Managers more time and less hassle.

For further resources and  
documentation please visit us:  
**[www.cinos.net](http://www.cinos.net)**